

# Evolução Urbana da Vila dos Remédios

*Urban Evolution of Vila dos Remédios*



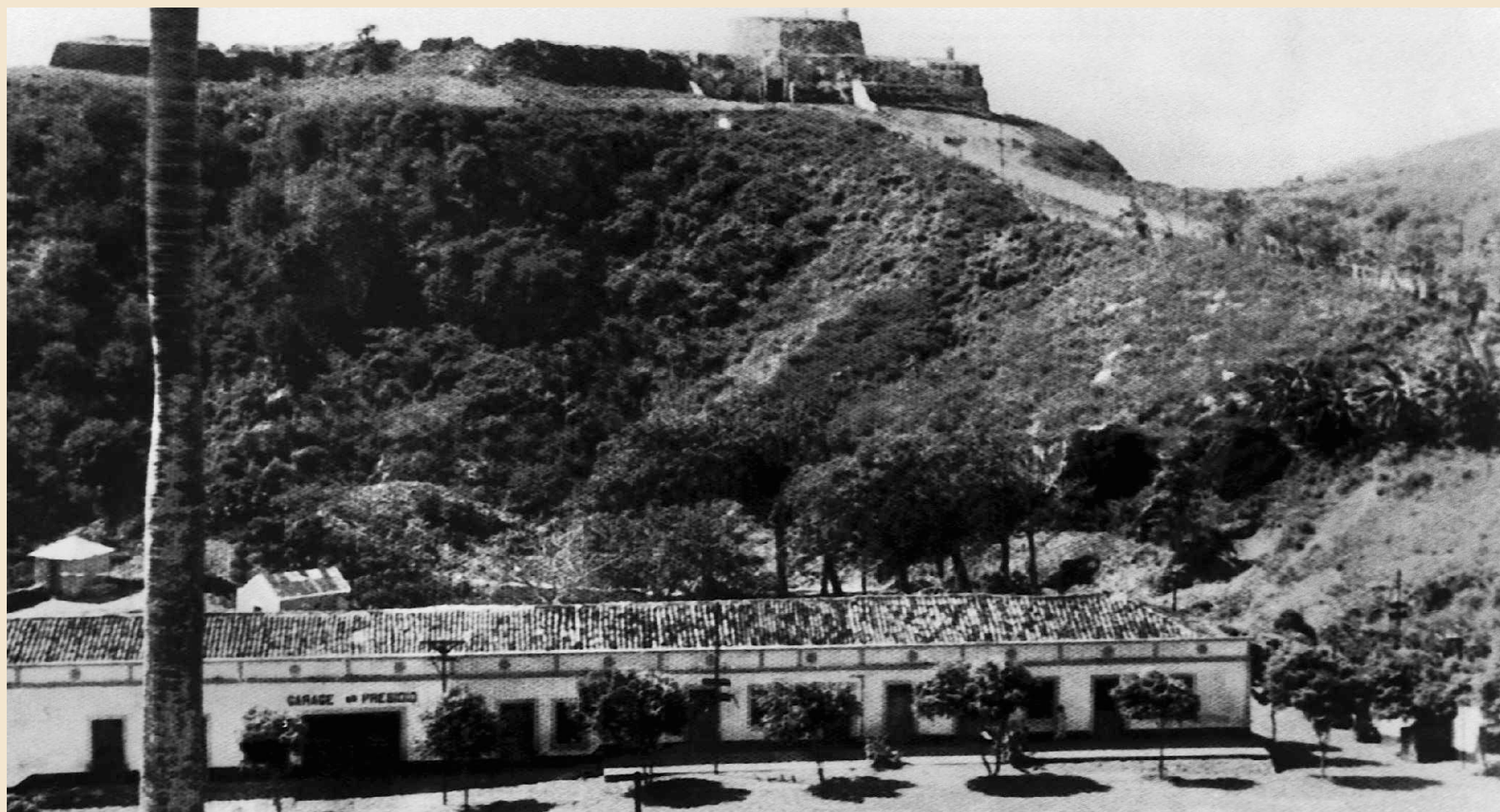
Armazém de produtos agrícolas. 1929.



Armazém transformado em Almoarifado. 1931.



Armazém de Cereais. 1929.



Armazém transformado em garagem. 1931.

Chafariz. 1936.



Parque de Santa'Ana na Vila dos Remédios, na década de 1930.



Ponte sobre o riacho Mulungu, século XVII.



The unique urban design of the Vila, with squares, stone paving and large buildings. Strategically, it was not visible from the sea. For more than two centuries, this nucleus was used, modified and had other buildings added. The largest interference happened in 1942, due to the over-occupation during the Second World War, when part of its old structure gained precast concrete structures, more practical in times of emergency.

Travessa da Estrela.



Antiga Escola, ao lado do Antigo Cinema. 1948.



Rua do Sol, casario ao redor do Palácio São Miguel. 1948.



Cemitério. 1940.

